

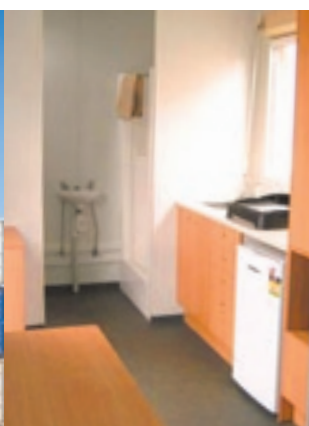
high end 20'

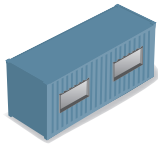
Description	quantity
Door	1
Window with wind up security grill	1
Fixed wall air conditioning unit – 2.5 horsepower / 10 amp	2
Kitchen cupboards (drawers for basic cutlery and crockery, and bench)	1
Single bunk beds	2
Clothing bins under beds	2
60 Litre zip hot water system / tank (to be shared by both rooms)	1
Small sink with hot & cold water	1
Clothes cupboard (clothing to be folded and hung up)	1
Bar fridge	1
Fold away table	1
Shower	1
Florescent light	1
Toilet	1
Vanity basin	1



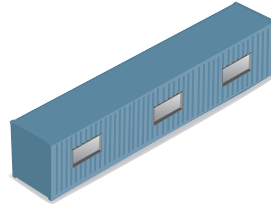
high end 20' continued

Description	quantity
Fully insulated	–
Sealed polyurethane floor	–
Bracket for TV, DVD player and a stereo	1
Microwave	1
Double power points	3





20'



40'

dimensions

	20' low	20' high	40' low	40' high
length (external)	6.1m	6.1m	12.2m	12.2m
width (external)	2.5m	2.5m	2.5m	2.5m
height (external)	2.6m	2.9m	2.6m	2.9m
length (internal)	5.9m	5.9m	12m	12m
width (internal)	2.4m	2.4m	2.4m	2.4m
height (internal)	2.4m	2.7m	2.4m	2.7m

capacity

	20' low	20' high	40' low	40' high
cubic capacity	32.8m ³	37m ³	67.2m ³	75.9m ³
empty weight	2,400kg	2,500kg	4,000kg	4,200kg
max contents weight	21,700kg	21,600kg	26,500kg	26,300kg
max total weight	24,100kg	24,100kg	30,500kg	30,500kg

